

CONFERENCE PROGRAM



SEATTLE • 9-14 OCTOBER 2023

The Future of TECH

TECHNOLOGY • ENVIRONMENT • CULTURAL HERITAGE **INTERNATIONAL**



**ASSOCIATION FOR PRESERVATION TECHNOLOGY INTERNATIONAL ANNUAL CONFERENCE
SHERATON GRAND SEATTLE**

<https://aptseattle2023.eventscribe.net>

Spanning the decades - Encompassing the globe

SAP2000[®] and ETABS[®] TURN 50!

AS WE CELEBRATE THE
50TH ANNIVERSARIES OF
ETABS AND SAP2000 IN
OVER 160 COUNTRIES ...

A SOFTWARE
PRODUCT THAT'S OVER
50 YEARS OLD? WOW!
UNIMAGINABLE!

AND CSI HAS
TWO OF THEM!

... WE WOULD LIKE TO
RECOGNIZE OUR FRIENDS,
FELLOW PROFESSIONALS AND
ROLE MODELS EVERYWHERE!

... FROM THE VERY
BEGINNING, OUR CONNECTION
WITH EVERY ONE OF YOU HAS
MOTIVATED, EMPOWERED AND
INSPIRED US TO AIM FOR
HIGHER GOALS!

... AND THAT IS
WHAT HAS MADE
US WHAT WE ARE
TODAY! 50,
THANK YOU!



WELCOME

APT Board of Directors Executive Committee

Taryn Williams
President

Gina Crevello
*Past President,
Chair Nominating Committee*

Julia Manglitz
*Vice President,
Co-Chair Conferences Committee*

Lena Buchinger
*Vice President,
Co-Chair Publications Committee*

Lurita McIntosh Blank
Treasurer

Greg Galer
Executive Director

Directors

Emily Beauregard
Co-Chair Membership Committee

Renata Campiotto
Director

Germaine St. Joseph
Director

Sarah Gray
*Co-Chair Technical Committee on
Preservation Engineering*

Robert Hotes
Co-Chair Partnerships and Outreach Committee

Sarah Migliore
Co-Chair Chapters Committee

Arlin Otto
*Emerging Professional, Co-Chair Membership
Committee*

Richard Renaud
Member, Technical Committee on Modern Heritage

Marco Rezende
Co-Chair Chapters Committee

Michael Tomlan
Co-Chair Academics and Research Committee

Elaine Shapiro
Co-Chair Student Scholarships Committee

Tiffani Simple
Co-Chair Inclusion Advocacy Committee

Directors at Large

Bryan Green
Co-Chair Training and Education Committee

Andrea Griletto
Co-Chair Partnerships and Outreach Committee

Jamie Morris
Co-Chair Development Committee

Nikolas Marsall-Moritz
Co-Chair Training and Education Committee

On behalf of the Association for Preservation Technology International, I am extending a sincere welcome to Seattle. We are excited to gather on the west coast and continue a decades-long annual tradition of sharing our technical knowledge to better preserve the built environment. We are each here to receive knowledge - from events such as presentation sessions, field sessions, and workshops - but we are also each here to share our experience and expertise with others, whether or not we are formally presenting content to an audience. Furthermore, when we depart the conference, we will share our knowledge in our project work, our teaching, our writing, and our professional relationships. We are each ambassadors of the technical resources that APT offers, and why membership in APT elevates the quality of work we do in the world.

Whether you are here for the first time, or have attended APT conferences for many years, we hope you experience the richness of the conference offerings, make many new friends, and experience the city of Seattle through the special lens of historic preservation.

We are deeply grateful for the work of our Local Conference Committee and the contributions of our conference sponsors in making this year's event possible. Enjoy your time here learning together and exploring Seattle!

Sincerely,



Taryn Williams, SE, PE, APT RP
APT President

Seattle is the largest seaport city in the Pacific Northwest region. With a growth rate of 21% between 2010 and 2020, it makes it one of the nation's fastest-growing large cities. Indigenous peoples inhabited the Seattle area for at least 4,000 years before the first permanent European settlers. Arthur A. Denny and his group of travelers, arrived on November 13, 1851 and the settlement was named "Seattle" in honor of Chief Si'ahl of the local Duwamish and Suquamish tribes. Today, Seattle's diverse population includes Native, Scandinavian, European American, Asian American, and African American people, as well as a thriving LGBTQ community. The "Emerald City" is defined by Puget Sound to the west, lakes formed during the last ice age, and mountains formed by plate tectonics. Water, green foliage, and mountains define almost every view. Seattle is home to numerous big businesses like Boeing, Amazon, Microsoft, and Starbucks, and nourishes an art and music scene that has set trends around the globe. Seattle's skyline is peppered with historic towers next to modern landmarks.

This year's conference is guided by the Future of T.E.C.H. theme: Technology, Environment, and Cultural Heritage and investigates the blending of the multitude of natural environment and human cultures that create a unique environment for preservation and conservation. This includes the keynote presentation about the influence of geology on the region's development, materials that are native to the region, the blending of high tech and historic, sustainability and tradition while reaching wider and broader across the globe for content than ever before. On behalf of the Local Conference Committee we are honored to share what makes Seattle special with you all. Welcome to Seattle!



Brian D. Rich and Maya Foty
Conference Co-Chairs



MATERIALS FIT FOR PURPOSE



LimeWorks.us is a manufacturer, educator, and mentor in the use of breathable lime mortars, stuccos, plasters, and mineral paints appropriate for historic masonry restoration and sustainable building applications. Breathable materials that process water away from building interiors are key to safeguarding a structure as well as extending the service life of a repair. The dedicated staff at LimeWorks.us can guide you with advice for your specific application.

SCAN ME



TABLE OF CONTENTS

Welcome	1	APT-PETC Student	
Continuing Education	3	Design-Build Competition	26
Agenda at-a-Glance	5,7	Field Sessions	27
Sponsors	8-9	Exhibit Hall Map	28
APT Conference Supporters	10	Exhibitors	29
Special Events	11	APT Seattle Conference	
Workshops & Symposium	13	Committee Volunteers	30
APT Committee Meetings	13	General Information	31
Presentations	15, 17, 19, 21, 23	Mobile App	31
Getty Grant Recipients	24	Sheraton Grand Map	32
Student Scholars	25		

CONTINUING EDUCATION



APT is an approved provider for the following professional continuing education (CE) credits: AIA and RCEP. Continuing Education Certificates can be obtained via the mobile app after completing evaluations for each session attended. Hours will be reported to AIA or RCEP based on your certificate after October 23, 2023.

PLEASE READ- Important AIA/RCEP Continuing Education Credit Process

In order to receive CE credits for attending education sessions, each attendee MUST check themselves into a session utilizing a smartphone and the APT Conference mobile app (see instructions below).

Before entering a session room, scan the QR code posted directly outside of the room. This code will be posted for the FIRST 15 MINUTES of each session only. Individuals arriving AFTER the first 15 minutes of a session will NOT be allowed to check in to receive CE credit for that session per AIA/RCEP program rules.

Once a session is complete, attendees MUST complete the session survey available via the mobile app in order to receive the CE credit (see instructions below). Attendees are free to move between sessions and thus may attend more than one session in a given time block. HOWEVER, due to AIA program rules, CE credit can only be given for the first session checked into and which also has a completed session survey.

To receive CE credit, ALL session surveys MUST be completed by Monday, October 23, 2023. Surveys completed after this time will not receive CE credits.

USING THE APT CONFERENCE MOBILE APP TO CHECK IN:

- Upon arriving to each session that offers CE units, you must check in using this year's version of the mobile app.
 - A QR code will be provided for the first 15 minutes of the session on slides or on signage at the entrance door.
 - Field sessions, workshops, and the symposium will provide the QR codes on the bus or at the venue.
1. Open your APT Conference mobile app. (Make sure you're logged in.)
 2. Tap the hamburger (3 horizontal lines) in the top right corner.
 3. Tap the QR Code Scanner icon.
 4. Scan the QR code being displayed in the session room, bus, or venue.
 5. Once the session pops up on your mobile app, tap the "Check In" icon on the bottom. You're all checked in!



PROSOCO

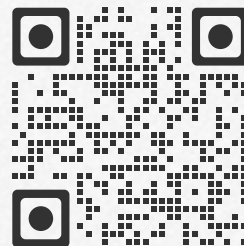
Photo by Steve Morgan

NO TWO

RETROFITS

ARE ALIKE

That's why we recommend pull-testing on retrofits involving seismic or structural wall repairs. PROSOCO provides pull-tests in order to customize anchoring solutions specific to each unique wall, including the veneer, backup material, wall conditions and other variables. That's what we did on Benson Polytechnic High School in Portland, Ore., a \$400 million restoration using our customized pull-test rigs, anchors and masonry cleaners.



SEE HOW THEY DID IT

GET PROSOCO ON YOUR TEAM



800-255-4255 // PROSOCO.COM

AGENDA AT-A-GLANCE*

For the most up-to-date agenda, download the mobile app or see the conference website:

<https://aptseattle2023.eventscribe.net>

SH = Sheraton Grand

(\$) = Additional fee to attend. Space permitting, you may still purchase tickets onsite, check availability at the registration desk.

Additional information on workshops and field sessions is available on the mobile app and the conference website.

Monday, October 9		
7:30am-8:45am	Continental Breakfast	SH - Grand Prefunction
7:30am-6:30pm	Registration	SH - Grand Prefunction
8:30am-5:00pm	Board of Directors Meeting (Private Event)	SH - Jefferson
9:00am-5:30pm	WS1 - 20th Century Engineered Wood Products: Plywood and Laminated Timber (\$)	Center for Wooden Boats (see conference app)
9:00am-5:00pm	WS3 - Heritage at Risk - Improving Outcomes for Historic Sites Impacted by Natural Disasters (\$)	SH - Aspen
Tuesday, October 10		
7:30am-8:45am	Continental Breakfast	SH - Grand Prefunction
7:30am-6:30pm	Registration	SH - Grand Prefunction
8:00am-5:00pm	Full Day Field Sessions (\$)	Offsite
8:00am-12:00pm	Half Day Field Sessions (\$)	Offsite
9:00am-5:00pm	WS1 - 20th Century Engineered Wood Products: Plywood and Laminated Timber (\$)	Center for Wooden Boats (see conference app)
8:00am-6:00pm	WS2 - New Technologies for Documenting Old Buildings (1-day Workshop) (\$)	Stimson Green Mansion (see conference app)
9:00am-5:00pm	WS3 - Heritage at Risk - Improving Outcomes for Historic Sites Impacted by Natural Disasters (\$)	SH - Aspen
1:00pm-5:00pm	Half Day Field Sessions (\$)	Offsite
Wednesday, October 11		
7:30am-8:45am	Continental Breakfast	SH - Grand Prefunction
7:30am-6:30pm	Registration	SH - Grand Prefunction
8:00am-9:00am	Student Scholar Meet & Greet Breakfast	SH - Cirrus
8:00am-12:00pm	Half Day Field Sessions (\$)	Offsite
9:00am-12:00pm	College of Fellows Business Meeting (see conference app for accurate time)	SH - Redwood
9:00am-12:00pm	Latin America and Caribbean Chapter (LACC) Business Meeting (see conference app for accurate time)	SH - Cedar
9:00am-5:00pm	Preservation Engineering Technical Committee (PETC), Student Teams Workshop	SH - Issaquah
9:00am-5:00pm	Technical Committee on Documentation (TC-Doc) Student Teams Workshop	SH - Aspen
12:00pm-2:30pm	Student Scholar Practice Sessions	SH - Metropolitan/Grand A
12:00pm-3:00pm	APT Committee Meetings (see pg. 13 for details)	SH - Redwood, Cedar, Jefferson
3:30pm-5:00pm	SE1 - Welcome & Opening Keynote	SH - Metropolitan
5:00pm-8:00pm	SE2 - Exhibit Gala & Reception	SH - Grand BCD

*At press time. Consult mobile app for any schedule changes.

An architectural rendering of the interior of Michigan Central Station in Detroit. The image shows a large, grand hall with high, vaulted ceilings and arched windows. The space is filled with people, some walking and some sitting at tables, suggesting a lively public space. A large, ornate chandelier hangs from the ceiling. In the background, a sign reads "CORKTOWN STATION".

Sustain Renew Reimagine

MICHIGAN CENTRAL STATION
Detroit, Michigan

quinnevens.com

**QUINN
EVANS**

AGENDA AT-A-GLANCE

Thursday, October 12

7:30am-9:00am	Breakfast with Exhibitors	SH - Grand BCD
7:30am-9:00am	APT Committee Meetings (see pg. 13 for details)	SH - Redwood, Cedar, Jefferson
7:30am-6:30pm	Registration	SH - Grand Prefunction
9:00am-10:30am	SE3 - College of Fellows Roundtable	SH - Grand A
9:00am-10:30am	CS1.1 - Innovation in Adaptation	SH - Metropolitan A
9:00am-10:30am	CS2.1 - Climate Preparedness	SH - Metropolitan B
9:00am-10:30am	CS3.1 - Cultural Conservation	SH - Willow
10:30am-11:00am	SE4 - Preservation Engineering Technical Committee (PETC) Student Teams Build	SH - Grand BCD
10:30am-11:00am	Refreshment Break in Exhibit Hall	SH - Grand BCD
11:00am-12:30pm	CS1.2 - Sustainable Historic Buildings and Materials	SH - Metropolitan A
11:00am-12:30pm	CS2.2 - Embodied / Operational Carbon	SH - Metropolitan B
11:00am-12:30pm	CS3.2 - Civil Rights in the United States	SH - Willow
12:30pm-2:00pm	SE5 - Student Recognition Luncheon (\$) or Lunch On Your Own	SH - Cirrus (see conference app)
2:00pm-3:30pm	CS1.3 - Documentation Technology	SH - Metropolitan A
2:00pm-3:30pm	CS2.3 - Solutions for Climate Adaptations	SH - Metropolitan B
2:00pm-3:30pm	CS3.3 - Cultural Restoration	SH - Willow
3:30pm-4:00pm	SE4 cont'd - Preservation Engineering Technical Committee (PETC), Student Teams Load Testing	SH - Grand BCD
3:30pm-4:00pm	Refreshment Break in Exhibit Hall	SH - Grand BCD
4:00pm-5:30pm	SE6 - APT Annual General Meeting	SH - Grand A
6:30pm-7:00pm	SE7 - AIA Historic Resources Committee Reception	Town Hall (see conference app)
7:00pm-8:30pm	SE8 - College of Fellows Installation & Keynote	Town Hall (see conference app)
8:30pm-11:30pm	SE9 - Chapters Mixer	Flatstick Pub (see conference app)

Friday, October 13

7:30am-9:30am	Continental Breakfast	SH - Grand Prefunction
7:30am-6:30pm	Registration	SH - Grand Prefunction
8:00am-9:15am	SE10 - Chapters Breakfast (\$)	SH - Cirrus
9:30am-11:00am	CS1.4 - Preserving and Stabilizing Historic Materials	SH - Metropolitan A
9:30am-11:00am	CS2.4 - Unreinforced Masonry (URM) Structures	SH - Metropolitan B
9:30am-11:00am	CS3.4 - Culture and Interpretation	SH - Willow
11:00am-1:00pm	Board of Directors Meeting #2	SH - Jefferson
11:00am-1:00pm	Lunch On Your Own	(see conference app)
1:15pm-2:45pm	CS1.5 - Understanding Historic Construction	SH - Metropolitan A
1:15pm-2:45pm	CS2.5 - Adapting Historic Envelopes	SH - Metropolitan B
1:15pm-2:45pm	CS3.5 - The Culture of Technology	SH - Willow
3:00pm-4:00pm	APT Committee Meetings (see pg. 13 for details)	SH - Redwood, Cedar, Jefferson
3:00pm-5:00pm	SE11 - PETC Student Design-Build Presentations and Awards	SH - Issaquah
6:30pm-9:30pm	SE12 - APT Awards Banquet (\$)	Block 41 (see conference app)

Saturday, October 14

9:00am-5:00pm	SE13 - Symposium - Aging Composite Materials and Assemblies: Sustainable Repair & Reinvestment (\$)	SH - Willow A
---------------	---	---------------

SPONSORS*

TITLE



DIAMOND



GOLD



SPONSORS*

SILVER



BRONZE

4EA Building Science LLC
 American Institute of Architects Historic
 Resources Committee
 Anderson Hallas Architects
 Architectural Preservation Studio, DPC
 Barbara A. Campagna/Architecture
 + Planning, PLLC
 BEECK Mineral Paints
 Berkshire Dimensions
 CASS Sheetmetal
 Conrad Schmitt Studios, Inc.
 DLR Group

Goody Clancy
 Grunwell-Cashero Co
 Harboe Architects
 Integrus + YGH
 King County Historic
 Preservation Program
 Klein & Hoffman
 Landmark Facilities Group
 Lease Crutcher Lewis
 Mahlum Architects
 Marvin Anderson Architects
 Masonry Solutions International, Inc

Page & Turnbull
 PCS Structural Solutions
 Rafn Company
 Rath, Rath & Johnson, Inc.
 RLA Conservation of Art + Architecture
 Silman
 Terracon
 Thornton Tomasetti
 Traditional Cut Stone Ltd
 UMC, Inc.
 VoidSpan

*Donors and logos received as of press time.

APT CONFERENCE SUPPORTERS

FRIENDS OF CONFERENCE



COF KEYNOTE DONATIONS

Annabelle Radcliffe-Trenner
Anne Sullivan
Anne Weber
Baird M Smith
Barbara Anne Campagna
Carl Elefante
Caroline Alderson
Caroline R Alderson
Carolyn Searls
Dan Worth
David M. Hart
David N. Fixler

David Paul Wessel
David Woodcock
Deborah Slaton
Diana Waite
Donald Friedman
Edmund Meade
Harry Hunderman
Ilene Rogers Tyler
Ilene Tyler
Janet Null
Joan C. Berkowitz
John A. Burns

John Burns
John D. Lesak
Kyle Normandin
Lonnie Hovey
Marilyn Kaplan
Mario Eduardo Santana Quintero
Mark Julian Rabinowitz
Mark Thompson Brandt
Mary Jablonski
Melvyn Green
Michael Schuller
Nancy Therese McCoy

Pamela Jerome
Paul E. Gaudette
Ron Anthony
Ronald Dean Staley
Rosa Lowinger
Stephen Kelley
Susan Ross
Thomas Clayton Jester
Timothy Crowe
Tom Whitmore
Walter Sedovic

STUDENT SCHOLARSHIP DONATIONS

Andreea Hamilton, McCoy Collaborative, a TreanorHL Company
Belinda Stewart, Belinda Stewart Architects, PA
CSI
David Hart, DMHE
David Walter Look
David Woodcock, Preservation Consultant
Deborah Slaton, Wiss, Janney, Elstner Associates, Inc.
Donald Friedman, Old Structures Engineering
Joan Berkowitz, Joan Berkowitz Architectural Conservation
Elise Johnson-Schmidt, Johnson-Schmidt & Associates, Architects
Joseph Oppermann, Architect PA
Julia Manglitz, Quinn Evans
Lesley Gilmore, Gilmore Fanzen Consulting LLC

Lorne McConachie, Bassetti Architects
Michael Tomlan, Cornell University
Mike Jackson, D J McRae Contractors Ltd.
Natalie Smith, NCS Architecture
Neal Vogel, Restoric Enterprises, LLC
Pamela Jerome, Architectural Preservation Studio, DPC
Peter Wollenberg, WBC
Rebecca L. Stevens & Thomas A. Vitanza (RA, AIA, NCARB)
Ron Anthony, Anthony & Associates
Sue Ann Pemberton, University of Texas at San Antonio
Urmila Srinivasan, Page & Turnbull
Warren Wilford

PETC DONATIONS

Atkinson-Noland & Associates
Bennett Preservation
Brook Restoration
D J McRae Contractors Ltd.
JB Conservation
Masonry Institute of Washington
RDH Building Science Inc.
Tacoma Engineers
Wiss, Janney, Elstner Associates, Inc.
Women in Restoring & Engineering (WiRE)

OTHER DONATIONS

Barbara Campagna
Don Davis
Jennifer Correia
Ron Wright

SPECIAL EVENTS

Additional information and speaker bios can be found on the mobile app and conference website. (\$) Fee to attend.

Wednesday, October 11



3:30pm-5:00pm

SE1 Welcome & Opening Keynote

David B. Williams

***"Too High and Too Steep:
Reshaping Seattle's Topography"***

Join APT President Taryn Williams for the official conference kick-off as we welcome attendees, and recognize the individuals and sponsors that made this conference possible. This will be followed by the keynote presentation.

Scan the QR code posted at the entrance and on the presentation screen within the first 15 minutes for CE credit.

5:00pm-8:00pm

SE2 Exhibit Gala & Reception

The Exhibit Gala is a festive event which gives you the opportunity to connect with exhibitors, learn about their wares and services, and reconnect with your peers. Also welcome, meet, and learn about our 2023 Getty Scholars.

Thursday, October 12

9:00am-10:30am

SE3 College of Fellows Roundtable

Panelists will discuss development models that best ensure the preservation of the rich culture and a sustainable future. Scan the QR code posted at the entrance and on the presentation screen within the first 15 minutes for CE credit.

10:30am-11:00am (build) & 3:30pm-4:00pm (load testing)

SE4 Student Design-Build Competition

Come see the students build and test their masonry arches. A great opportunity to encourage future preservationists!

12:30pm-2:00pm

SE5 Student Recognition Luncheon (\$)

We will recognize the 2023 Student Scholars, their mentors and school advisors, and the 2023 Student Design-Build Competition teams.

4:00pm-5:30pm

SE6 APT Annual General Meeting

Learn about recent and upcoming APT activities, hear our election results, see our newest Recognized Professionals announced, and get a peek at APT 2024!

6:30pm-7:00pm

SE7 AIA HRC Reception

The AIA Historic Resources Committee invites you to join them for a cocktail and light hors d'oeuvres. Cash bar available.



7:00pm-8:30pm

SE8 College of Fellows Installation & Keynote

Yasmeen Lari

***"Lessons from Global South:
Community Engagement for
Decolonization and Decarbonization
of the Built Environment"***

A special night to recognize this year's inductees. This will be followed by the keynote presentation.

Scan the QR code posted at the entrance and on the presentation screen within the first 15 minutes for CE credit.

8:30pm-11:30pm

SE9 Chapters Mixer

Open to all conference attendees, join APT members and enjoy a bite while socializing at a local spot. No fee required to attend, pay for your own expenses.

Friday, October 13

8:00am-9:15am

SE10 Chapters Breakfast (\$)

Rise and shine, grab a great breakfast, and connect with professionals from the APT chapter that represents your geographical area and also members from other chapters. Make the most of your APT membership!

3:00pm-5:00pm

SE11 PETC Student Design-Build Presentations & Awards

Time to see which student team will take home 1st place!

6:30pm-9:30pm

SE12 APT Awards Banquet (\$)

A night to celebrate the successes of APT. Time to get dressed up, have fun, and honor APT's best!

Saturday, October 14

9:00am-5:00pm

SE13 Symposium (\$)

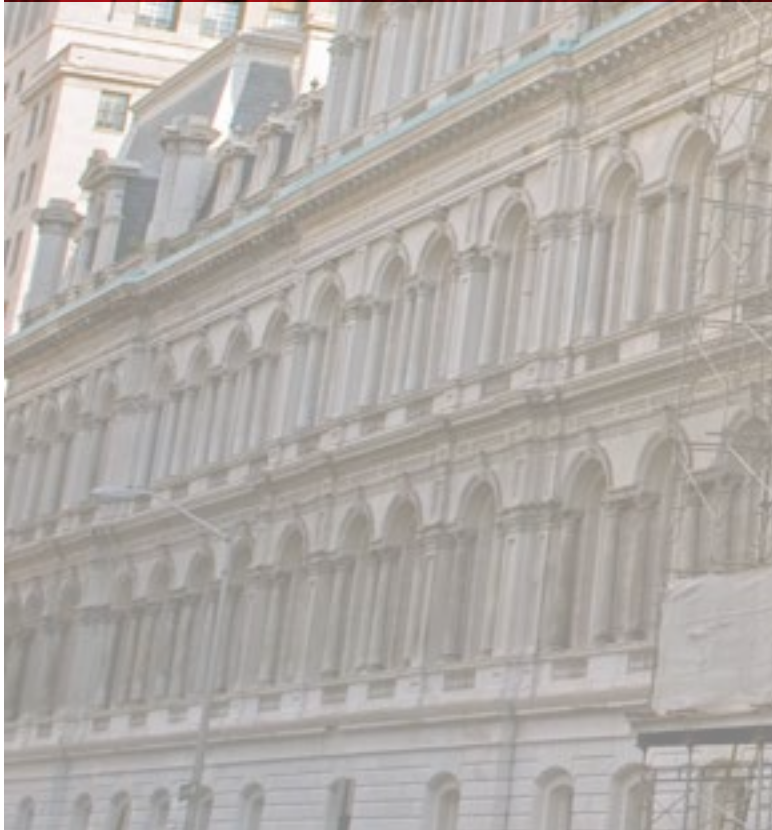
Learn about Aging Composite Materials and Assemblies: Sustainable Repair & Reinvestment.

PULLMAN

Time to preserve history and restore your aging structure?

Our team of historic restoration experts has extensive experience working with a wide variety of material types, including:

- Masonry and stone
- Facade inspection support
- Brick pointing and replacement
- Cast stone
- Terra cotta
- Timber frames
- Structural steel
- Strengthening of masonry walls
- Corrosion mitigation and control
- Painting and coating



WORKSHOPS & SYMPOSIUMS

Additional information and speaker bios can be found on the mobile app and conference website. Fee to attend. **You must scan the QR code provided on the bus or the venue with the APT Conference mobile app scanner to receive CE credit. More information is on page 3.**

WS1 - 20th Century Engineered Wood Products: Plywood and Laminated Timber

Monday, October 9, and Tuesday, October 10

This two-day workshop will address practical investigation and conservation of engineered wood products, which are becoming increasingly common, albeit inadequately understood historic fabric in our 20th century built heritage.

WS2 - New Technologies for Documenting Old Buildings

Tuesday, October 10

This one-day workshop will highlight and explore tools and techniques for documentation of the built environment, a critical first step for most preservation and adaptive reuse projects.

WS3 - Heritage at Risk - Improving Outcomes for Historic Sites Impacted by Natural Disasters

Monday, October 9, and Tuesday, October 10

This two-day workshop will examine the threats many communities and historic sites face as the pace and severity of natural and man-made disasters continues to increase across the globe.

SE13 - Symposium - Aging Composite Materials and Assemblies: Sustainable Repair & Reinvestment

Saturday, October 14

APT's Technical Committee on Modern Heritage invites practitioners, scholars, and decision-makers to contribute their experiences and wisdom in a working session to discuss model approaches and develop practice guidance for the responsible and cost-effective treatment of composite materials and assemblies.



INTERNATIONAL

APT Committee Meetings*

*Confirmed at press time. If your meeting is not listed, please check the mobile app.

All APT members are welcome to attend. Make the most of your membership and share your talents with APT committees!

Wednesday, October 11

12:00pm-1:30pm	Preservation Engineering Technical Committee	<u>Sheraton Grand</u> Redwood
12:00pm-1:30pm	Publications Committee	Cedar
12:00pm-1:30pm	Student Documentation Competition Presentation	Aspen
2:00pm-3:00pm	Technical Committee on Documentation	Aspen
1:30pm-3:00pm	Technical Committee on Modern Heritage	Redwood

Thursday, October 12

7:30am-9:00am	Partnerships & Outreach Committee	Redwood
7:30am-9:00am	Technical Committee on Materials	Cedar
7:30am-9:00am	Technical Committee on Sustainable Preservation	Jefferson

Friday, October 13

3:00pm-4:00pm	Technical Committee on Codes & Standards	Cedar
3:00pm-4:00pm	Training & Education Committee	Redwood

NICHOLSON & GALLOWAY

The Oldest Restoration Company in the United States
Founded 1849

HISTORIC PRESERVATION | ROOFING | MASONRY | COPPERSMITHING | WATERPROOFING
Phone: 516-671-3900 • Fax: 516-759-3569 • 261 Glen Head, NY 11545 • info@nicholsonandgalloway.com



Page/

With roots extending back to 1898, Page Southerland Page is an architecture and engineering firm that views preservation as the scientific and creative management of change with the utmost respect for the past.

pagethink.com/preservation-modernization



Matthew Chalifoux FAIA mchalifoux@pagethink.com **Deborah Fritz** AIA, LEED AP, CDT dfritz@pagethink.com **Cara Soh** AIA, LEED AP csogh@pagethink.com

PRESENTATIONS: THURSDAY, 9:00am-10:30am

IMPORTANT: In order to receive CE credits for attending education sessions, each attendee **MUST** check themselves into a session utilizing a smartphone and the APT Conference mobile app (see page 3).

Track 1 Technology

CS1.1 Innovation in Adaptation

SH - Metropolitan A

Session Chair
Stace Moyer

A Framework for Assisting the Adaptive Reuse Process of Historic Buildings: the Case Study of the Sao Luis Historic Centre in Brazil

Speaker:
Daniele M. S. Paulino

Illustrious Obscuritas: Restoring Prism Glass Transoms to Maximize Daylight

Speaker:
Neal A. Vogel

Mitigating Condensation Risk while Increasing Thermal Resistance: THERM Analysis of a Vacuum Insulated Panel Roof Retrofit at River Park Mutual Homes in Washington, D.C.

Speaker:
Daniel S. Castele

Resurrecting the Past - Preservation of a 118-year-old Stained Glass Inverted Dome in Oakland, California

Speaker:
Ariana Makau

Track 2 Environment

CS2.1 Climate Preparedness

SH - Metropolitan B

Session Chair
Heather Crane

Climate Resources for Cultural Heritage: A Collaborative Project from Held in Trust

Speakers:
Héctor J. Berdecía-Hernández
Sarah Sutton

Facilitating Structural Analysis of Historic Buildings with Digital Documentation

Speaker:
Saanchi Singh Kaushal

Power Generating Stations: Interpreting the Past, Powering the Present, and Planning for the Future

Speaker:
Christian Giansante

Start the Healing: A discussion of Federal Natural and Cultural Resources Recovery Support in Puerto Rico

Speakers:
Jennifer A. Wellock

Track 3 Cultural Heritage

CS3.1 Cultural Conservation

SH - Willow

Session Chair
Kim Gant

Partners in Preservation: The Importance of Conservator Participation during Construction

Speaker:
Stephanie M. Hoagland

Perspectives on the Potential of Heritage-led Development as an Agent of Sustainable Change in the Historic Core of Badagry, Lagos State, Nigeria, Africa

Speaker:
Ifelaju I. Olusanya

Reconstructing the Reconstructions: Preservation Issues in French 20th Century Concrete Architecture

Speaker:
Thomas E. Boothby

The Tale of Two Fresco Conservation Relocation Projects

Speakers:
Kiernan Graves
Jennifer Correia



QUALITY
MEASURED BY TIME

CUSTOM
PREBLENDED
MORTARS



US Heritage Group

10352 Franklin Ave., Franklin Park, IL 60131
©2023 U.S. Heritage Group. All Rights Reserved.

(773)-286-2100
info@usheritage.com
www.usheritage.com

AQYER
DEFINING THE BUILT WORLD

DOCUMENTATION • NON-DESTRUCTIVE EVALUATION • TRAINING & CONSULTING

3D LASER SCANNING • VIRTUAL TOURS • PHOTOGRAMMETRY • 3D, UAV, GIGAPAN, HD & INFRARED IMAGING • GPR • BIM • CAD

www.AQYER.com

PRESENTATIONS: THURSDAY, 11:00am-12:30pm

IMPORTANT: In order to receive CE credits for attending education sessions, each attendee **MUST** check themselves into a session utilizing a smartphone and the APT Conference mobile app (see page 3).

Track 1 Technology

CS1.2
Sustainable Historic Buildings and
Materials

Track 2 Environment

CS2.2
Embodied / Operational Carbon

Track 3 Cultural Heritage

CS3.2
Civil Rights in the United States

SH - Metropolitan A

Session Chair
Ilene R. Tyler

B-72 Snakes: A Novel Technique for
the Application of Bulked Paraloid
B-72 Fills

Speaker:
Tamara Disi

Comparing Non-destructive
Evaluation Techniques to Predict
Plaster Failure, with Drayton Hall as
a Case Study

Speakers:
Patricia Lowe Smith
Amalia Leifeste

Metropolitan United Church: A Case
Study of Building Science Diagnosis
Tools

Speaker:
Randy Van Straaten

School Assignment: Determine
the Practical Ability to Revitalize a
Portfolio of Vacant School Properties

Speaker:
Cheryl Early

SH - Metropolitan B

Session Chair
Paul Gaudette

A BIM-based LCA Framework for
Assessing Embodied Carbon and
Decarbonization Opportunities in Con-
crete at the Brutalist-era University of
Massachusetts' Bromery Center for
the Arts

Speaker:
Diana Andrea Brito Picciotto

Preservation is Climate Action: Using
the CARE Tool as a Lever

Speakers:
Erin McDade
Lori Ferriss

Renovating a Pacific Northwest
Mid-Century Gem

Speaker:
April Ng

The Greenest Bridge: Counting the
Carbon Benefit of Infrastructure
Reuse and Preservation

Speaker:
Mark Thompson Brandt

SH - Willow

Session Chair
Caroline Lemay

Historic Educational Institutions:
Preservation Strategies to
Dismantling Systemic Socio-spatial
Barriers

Speaker:
Mariko C. Park

"Racial Reconciliation Begins by
Telling the Truth." Telling Emmett Till's
Truth Through the Restoration of the
Tallahatchie County Courthouse and
other Related Sites in the
Mississippi Delta

Speaker:
Belinda Stewart

Rehabilitation of the A.G. Gaston
Motel in the Birmingham Civil Rights
National Monument District

Speaker:
David Steele

Roberts Temple Church of God in
Christ - Chicago - Let the World See:
The Emmett Till Story

Speaker:
Edward I. Torrez

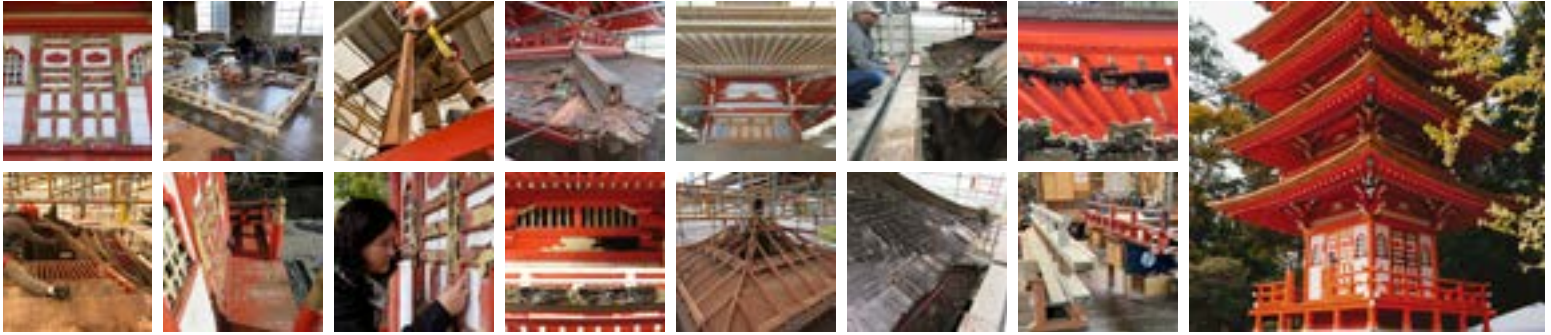


Architectural
Resources Group

Architects
Planners
Conservators

ARGcreate.com

We are proud to sponsor APT, as we envision *The Future of Tech.*



Japanese Tea Garden Pagoda Repair, San Francisco, CA

Providing expertise in preservation policy and standards, sustainable design, technical conservation investigation and solutions, and sharing our passion for realizing creative design solutions in historic environments.

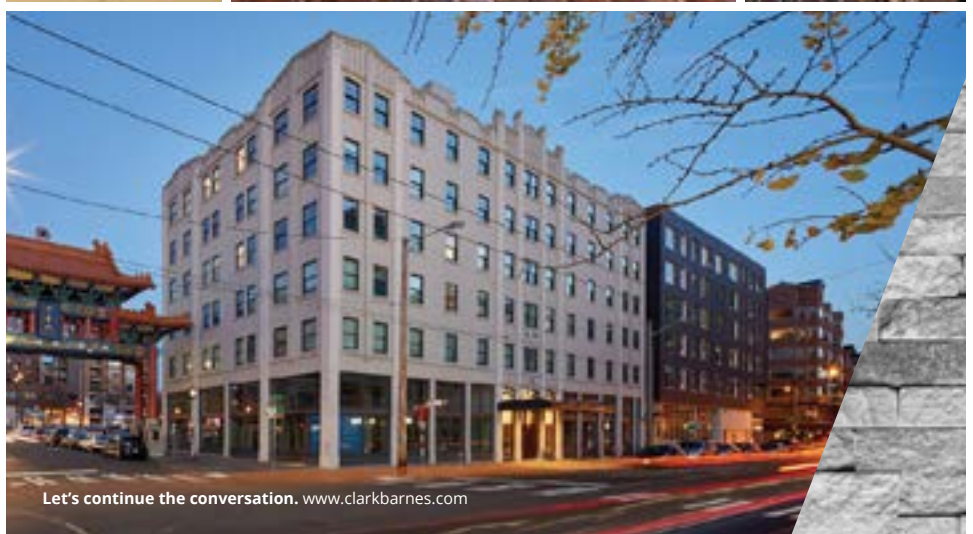
San Francisco | Los Angeles | Portland

HISTORIC CONSERVATION

A cornerstone of our philosophy is a commitment to historic conservation through the preservation, restoration, renovation, and adaptive reuse of existing and historic buildings.

We conduct extensive historic and cultural research, condition analysis, and regulatory compliance reviews to inform our design. As proponents of timeless design, CLARK / BARNES believes in nurturing the character of our communities through the strategic integration of the past and present.

CLARK / BARNES
PLANNING ARCHITECTURE HISTORIC CONSERVATION INTERIOR DESIGN



Let's continue the conversation. www.clarkbarnes.com

PRESENTATIONS: THURSDAY, 2:00pm-3:30pm

IMPORTANT: In order to receive CE credits for attending education sessions, each attendee **MUST** check themselves into a session utilizing a smartphone and the APT Conference mobile app (see page 3).

Track 1 Technology CS1.3 Documentation Technology	Track 2 Environment CS2.3 Solutions for Climate Adaptations	Track 3 Cultural Heritage CS3.3 Cultural Restoration
SH - Metropolitan A	SH - Metropolitan B	SH - Willow
Session Chair Anita Simon	Session Chair Deborah Slaton	Session Chair Kim Gant
Bridging The Gap Between Data Collection And Data Representation: Challenges Faced While Implementing Digital Tools For Condition Assessment of The Lincoln High School Speakers: Urmila Srinivasan Sarah E. Brummett	Nicolet Cathedral - Snow Management Challenges when Replacing a Complex Raraboloid Roof in a Northern Climate Speaker: Eric Stein	Caretaker's Lodges within the National Cemetery Administration: An Architectural Review of the United States National Cemeteries from Slavery to Today Speakers: Leila Hamroun-Yazid Kristina Whitney
Low-Cost 3D Documentation Tools in Preservation Speaker: Nicholas Cargill	Perceptions and Assumptions about Traditional Construction in Post-Disaster Engineering Reconnaissance Speaker: Anna Gasha	Freedom House - Reconciling with an Epicenter of the Slave Trade Speakers: James W. Shepherd Susan J. Pommerer
Scanning Using a Smartphone for Heritage Conservation: A Case Study Using the Reunion House Speaker: Ye Hong	Testing the Flood-Damage Resistance of Traditional Materials Speaker: Amy Elizabeth Uebel	Mary Wingfield Scott and the Importance of Diverse Perspectives in Preservation Speaker: Stephanie W. Gittins
Using Artificial Intelligence for Facade and Structural Inspections Speaker: Rachel Michelin	Water, Water Everywhere: Renewing and Floodproofing the Historic Waterbury (VT) State Office Complex Speaker: Jean Carroon	"See you at Lilli's": LGBTQ+ Cultural Heritage Documentation and Interpretation in Arlington, Virginia Speaker: Katie Hummelt

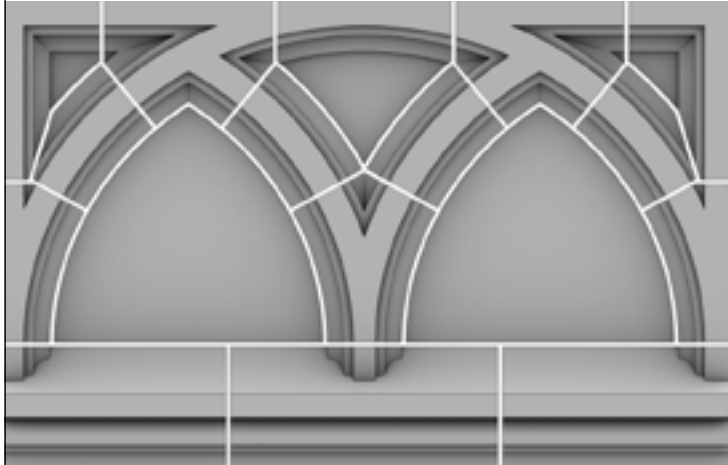


Specialized inspection, testing and 3D modeling services

Vertical Access integrates digital documentation into discovery and investigative phases of historic preservation and restoration projects. Scanning and 3D modeling services for documentation of as-built conditions, architectural reproduction & manufacturing of terra cotta, masonry, and other specialty materials and assemblies.

VERTICAL
access

VA4D



Preserving Windows and Doors

Solutions for steel and wood window and door restoration.

CHOSEN
WOOD WINDOW
MAINTENANCE, INC.

MODERN
VINTAGE
HISTORICAL

Residential and Commercial
Restoration
Replication
Energy-Efficient Solutions

*Serving the Northwest
and Beyond*

503-266-3830
www.chosenwwm.com



PRESENTATIONS: FRIDAY, 9:30am-11:00am

IMPORTANT: In order to receive CE credits for attending education sessions, each attendee **MUST** check themselves into a session utilizing a smartphone and the APT Conference mobile app (see page 3).

Track 1 Technology	Track 2 Environment	Track 3 Cultural Heritage
CS1.4 Preserving and Stabilizing Historic Materials	CS2.4 Unreinforced Masonry (URM) Structures	CS3.4 Culture and Interpretation
SH - Metropolitan A	SH - Metropolitan B	SH - Willow
Session Chair Stephen J. Kelley	Session Chair Evan Kopelson	Session Chair Pam Derry
In-Situ Coatings Removal using Steam for High Fire Risk Wood Structures Speaker: Tim Vandewalle	Base Isolating the Smithsonian Castle: Using West Coast Technology to Enhance Seismic Performance and Preserve the Historic Fabric of an East Coast Landmark Speakers: Margaret M. Cowie Nathan Hicks	Challenges in Conserving the Bauhaus-Style Reinforced-Concrete Central Market in Hong Kong Speakers: Pamela Jerome Sandeep Sikka
Just Right: Three Approaches to Laylights for Conservation, Restoration, and Interpretation Speaker: Katie S. Irwin	Empirical and Numerical Methods for the Seismic Analysis of a Historic Unreinforced Masonry Structure Speaker: Elyse Hamp	Historic Preservation and Equitable Development: Friends or Foes? Speakers: Matt Cohen Ellen Mirro
Lessons from a Salt Crystallization Inhibitor Inquiry Speaker: Michelle A. Leach	Keeping Up with the New Idea of Conservative Balance for Managing Earthquake Risks: the Chaste Lovers Insula in the Archeological Site of Pompeii Speaker: Francesca Brancaccio	The Use of Gamification to Enhance Understanding of Historic District Design Guidelines: The Case of Manhattan Heights, El Paso Speaker: Sarvin Eshaghi
Seeing Red: Analysis of Surface Changes in Red Colored Glass and Ceramic Glaze Speaker: Gabriela F. Genao	Strengthening of Masonry Structures for Hurricane Loads Speaker: Torin McCue	Van Asselt School: The Cultural Imperative of Giving a New Life to a Landmarked School Building Speakers: Caroline Lemay Ethan Bernau



EICHEM
CONSULTANTS

BUILDING ENVELOPE
Building Diagnostics
Corrosion Mitigation



HOW HEALTHY IS YOUR BUILDING?

HISTORIC

COMMERCIAL

RESIDENTIAL

ACADEMIC

LANDMARK

SERVICES:

1

Material Assessments
Corrosion Conditions
Forensic Evaluations

2

Corrosion Science & Mitigation
Life Cycle Costs Analysis
Service Life Assessments

3

Cathodic Protection
Electrochemical Repairs



SAFETY



BUDGET



DURABILITY



SERVICE LIFE



SECURITY



RISK MANAGEMENT

Echem Consultants can help provide **durability** and **material integrity** to **buildings** and their **critical components**.

Echem Consultants LLC | 22 North Front Street, Suite 201, New Paltz, NY 12561 | 845.215.4370 | echemconsultants.com



Craftsmanship, Artistry, Detail

JOHNCANNINGCO.COM | 203-272-9868

Infinitely curious, driven by perfection.

PRESENTATIONS: FRIDAY, 1:15pm-2:45pm

IMPORTANT: In order to receive CE credits for attending education sessions, each attendee **MUST** check themselves into a session utilizing a smartphone and the APT Conference mobile app (see page 3).

Track 1 Technology

CS1.5
Understanding Historic
Construction

Track 2 Environment

CS2.5
Adapting Historic Envelopes

Track 3 Cultural Heritage

CS3.5
The Culture of Technology

SH - Metropolitan A

Session Chair
Peter Meijer

Accessible Database for Structural
Assessment of Eastern Canada's Old
Unreinforced Masonry Buildings

Speaker:
Lucy J. Davis

Evaluation of Cast Iron Spiral Stairs
in Lighthouses

Speakers:
John S. Bennett
Craig M. Bennett

Getting a Handle on
Hydraulic-Press Brick

Speaker:
Gordon H. Bock

Modernizing the National Register
of Historic Places: Towards an Open
Data Framework

Speaker:
Matt Kelly

SH - Metropolitan B

Session Chair
Corey Spitzer

400-430 California Street Seismic
Upgrade - Making a
Historic Connection

Speaker:
Kirk Johnston

From the Top Down: Adapting the
Obsolete - Retrofitting a Historic
Copper Roof to Enhance
Performance and Mitigate Waste

Speaker:
Richard W. Off

"Pabst Blue Ribbon" – Modern
Applications for Rapid Documentation
& Reproduction of Historic
Architecture

Speaker:
Teresa M. Klopp

Technology in the Round: Tracking
Smithsonian's Hirshhorn Museum
Recladding Project

Speakers:
Carly Bond
Nicholas Patrick

SH - Willow

Session Chair
Nicholas Vann

Around the World in Eighty Years: the
Intercontinental Journey of Terracotta
Cladding to Australia

Speaker:
Natica Schmeder

Conservation of Watts Towers:
A Case Study

Speakers:
Mark R. Gilberg
Elisabetta Perfetti

Historic and Cultural Preservation
Through Digital Maps

Speaker:
Huy Pham

Revolutionizing Historic Preservation:
Analyzing Henry Trost's Buildings
Using Data Gathering, Mining, and
Visualization Technologies

Speaker:
Sepehr Vaez Afshar

GETTY GRANT RECIPIENTS

The APT Getty Scholars program is made possible with support from Getty through its Getty Connecting Professionals/Sharing Expertise initiative.



The Getty Connecting Professionals/Sharing Expertise Grant provides funding to professional organizations that serve museums and the disciplines of art history and conservation. The grant supports colleagues from underrepresented communities and countries with emerging economies to attend large-scale international forums for professional exchange. As a result of the grant, professionals that are often underrepresented have the opportunity to connect with international experts working in their fields, enhance their practical and theoretical knowledge, and take lessons-learned back to share with their local communities. Through this grant, preservation professionals from the following programs were selected to attend this year's Conference:

Latin America and Caribbean Scholars - For many years Getty grant funding has supported APT's mission to raise the profile of preservation technology in Latin America and the Caribbean. Applications for this year's grant included preservation professionals from Argentina, Brazil, Chile, Colombia, Dominican Republic, Mexico, Peru and Saint Lucia.

Latin America and Caribbean Scholars:

Renata Campiotto
Jhon Cotrina
Andrés Gaviria
Polyn Gonzalez
Germaine Joseph
Mariana Klimkievicz
Thalita dos Santos Oliveira
Marco Rezende
Fabiane Savino
Juan Solis

Equity Scholars - In collaboration with APT's Inclusion Advocacy Committee, grant funding supports our mission to encourage equity and cultural diversity within APT. The scholarships allow us to expand access to preservation professionals from diverse communities. Building upon last year's success, APT received a record number of applicants from BIPOC professionals in both the US and Canada.

Equity Scholars:

Arjun Bir
Alexi Caine
Moustafa EL-Assaly
Deborah Fritz
Christopher Kumaradjaja
Maegan Ludena Llanos
Modesto Melendez III
Aung Paing
Tara Paulose
Khayla Saunders



SEATTLE • OCTOBER 9-14, 2023

The Future of TECH

TECHNOLOGY • ENVIRONMENT • CULTURAL HERITAGE



STUDENT SCHOLARS

The APT Student Scholarships Committee selected the following students to receive an APT Seattle Scholarship, which includes conference registration, one-year membership to APT, the opportunity to speak during a presentation, and mentoring from a member of the College of Fellows.
Congratulations to this year's Student Scholars!

Michelle Leach
Columbia University

Saanchi Kaushal
Pennsylvania State University

Diana Andrea Brito Picciotto
University of Massachusetts Amherst

Matt Kelly
University of Oregon

Tamara Dissi
University of California Los Angeles

Teresa Klopp
University of Wisconsin-Milwaukee

Sarvin Eshaghi
Texas Tech University

Ifeloju Olusanya
University of Kansas

Anna Gasha
Columbia University

Mariko Park
Boston Architectural College

Stephanie Gittins
Boston Architectural College

Daniele Paulino
The Pennsylvania State University

Elyse Hamp
Carleton University

Sepehr Vaez Afshar
Texas Tech University

Ye Hong
University of Southern California

Student Scholarships Committee Co-Chairs
Andreea Hamilton and Elaine Shapiro

Many thanks to all the supporters of our Student Scholarships Program.



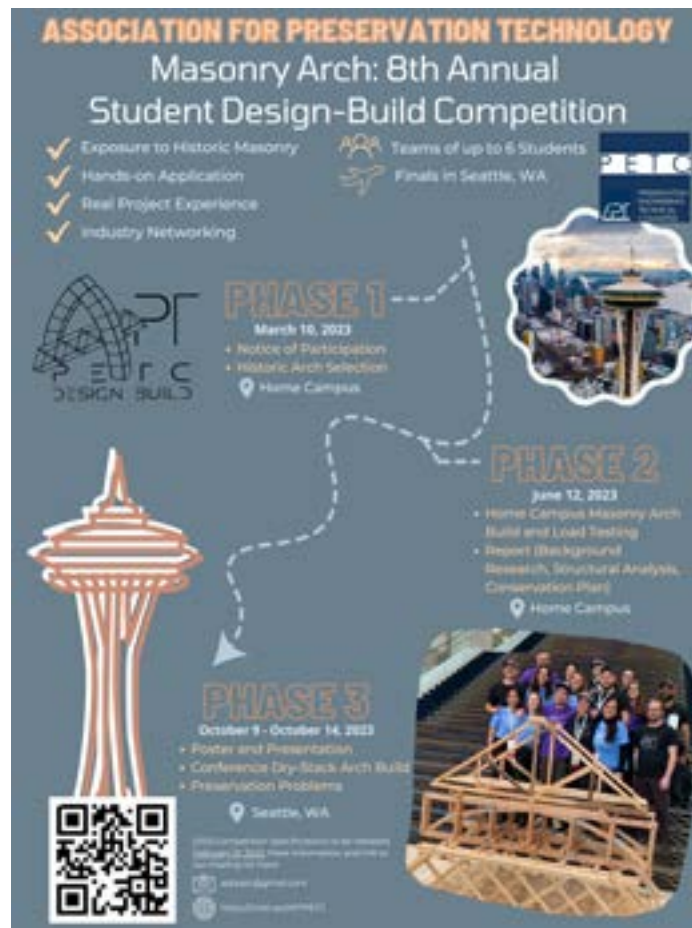
SEATTLE • OCTOBER 9-14, 2023

The Future of TECH

TECHNOLOGY • ENVIRONMENT • CULTURAL HERITAGE



APT-PETC STUDENT DESIGN-BUILD COMPETITION



2023 Student Design-Build Competition Finalists

Carelton University

Elyse Hamp
Krista Rowan
Lorenzo Bressan
Abi Kang
Kate Wishewan
Amanda Soo
Brooke Hewitt
Natalie Murdoch

Columbia University

Annie An
Gray Danforth
Madeline Hagan
Sophia Haynes
Brooke Marinovich
Eleanor Phetteplace
Andrés Santana-Miranda

School of the Art Institute of Chicago

Shelbye Doyen
Chanen Hansen
Laura Hershner
Victoria Hill
Shan Jiang
Sol Sherer-Estevez

McGill University

Lindsay Saad
Alex Menun
Amanda David
Mia Cender
Owen McQuirter-Kelly
Rodrigo Gallardo Davalos



This program was made possible through the countless hours of the Preservation Engineering Technical Committee. Thank you to all of the volunteers who contributed their time and talents to present instruction, review submissions, participate in the competition, and foster the future of the preservation engineering community.

Schedule of Events

Tuesday, October 10

7:00pm

Student Design-Build Competition Dinner

Wednesday, October 11

8:45am-12:00pm

Student Design-Build Seminar - SH Issaquah

1:00pm-2:45pm

Seattle Masonry Walking Tour

Thursday, October 12

10:30am-11:00am

Arch Build - Exhibit Hall

3:30pm-4:00pm

Arch Load Testing - Exhibit Hall

Thursday, October 12

3:00pm-4:30pm

Presentations - SH Issaquah

4:30pm-5:00pm

Awards - SH Issaquah

FIELD SESSIONS

Additional information about can be found on the mobile app and conference website. Fee to attend.

You must scan the QR code provided on the bus or the venue with the APT Conference mobile app scanner to receive CE credit. More information is on page 3.

FS1 - Culture and Resilience in Seattle's Chinatown-International District

Tuesday, October 10 - FULL DAY | 8:00am-5:00pm

FS2 - Tour of the Washington State Capitol: Innovations in Stone and Wood

Tuesday, October 10 - FULL DAY | 8:00am-5:00pm

FS3 - The Space Needle and the Civic Architecture of the Seattle Center

Tuesday, October 10 - FULL DAY | 8:00am-5:00pm

FS4 - Industrial History and Preservation at the Georgetown Steam Plant

Tuesday, October 10 - HALF DAY | 8:00am-12:00pm

FS5 - Pike Place Market and the Restoration of the Seattle Waterfront

Tuesday, October 10 - HALF DAY | 8:00am-12:00pm

FS6 - Olmsted Parks: Preservation in the Crown Jewel of the Emerald City Greenbelt

Tuesday, October 10 - HALF DAY | 1:00pm-5:00pm

FS7 - On the Water: How Seattle's Waterways Shaped the Landscape and Fabric of the Emerald City

Tuesday, October 10 - HALF DAY | 1:00pm-5:00pm

FS8 - University of Washington Collegiate Gothic: Retrofit and Restoration

Tuesday, October 10 - HALF DAY | 1:00pm-5:00pm

FS9 - Pioneer Square: Material Preservation in a Socially and Culturally Diverse Setting

Wednesday, October 11 - HALF DAY | 8:00am-12:00pm

FS10 - Seattle's Terra Cotta Buildings: Rehabilitation and Restoration Techniques and Strategies

Wednesday, October 11 - HALF DAY | 8:00am-12:00pm

FS11 - Conservation Works at Seattle's Historic Theaters

Wednesday, October 11 - HALF DAY | 8:00am-12:00pm



SEATTLE • OCTOBER 9-14, 2023

The Future of TECH

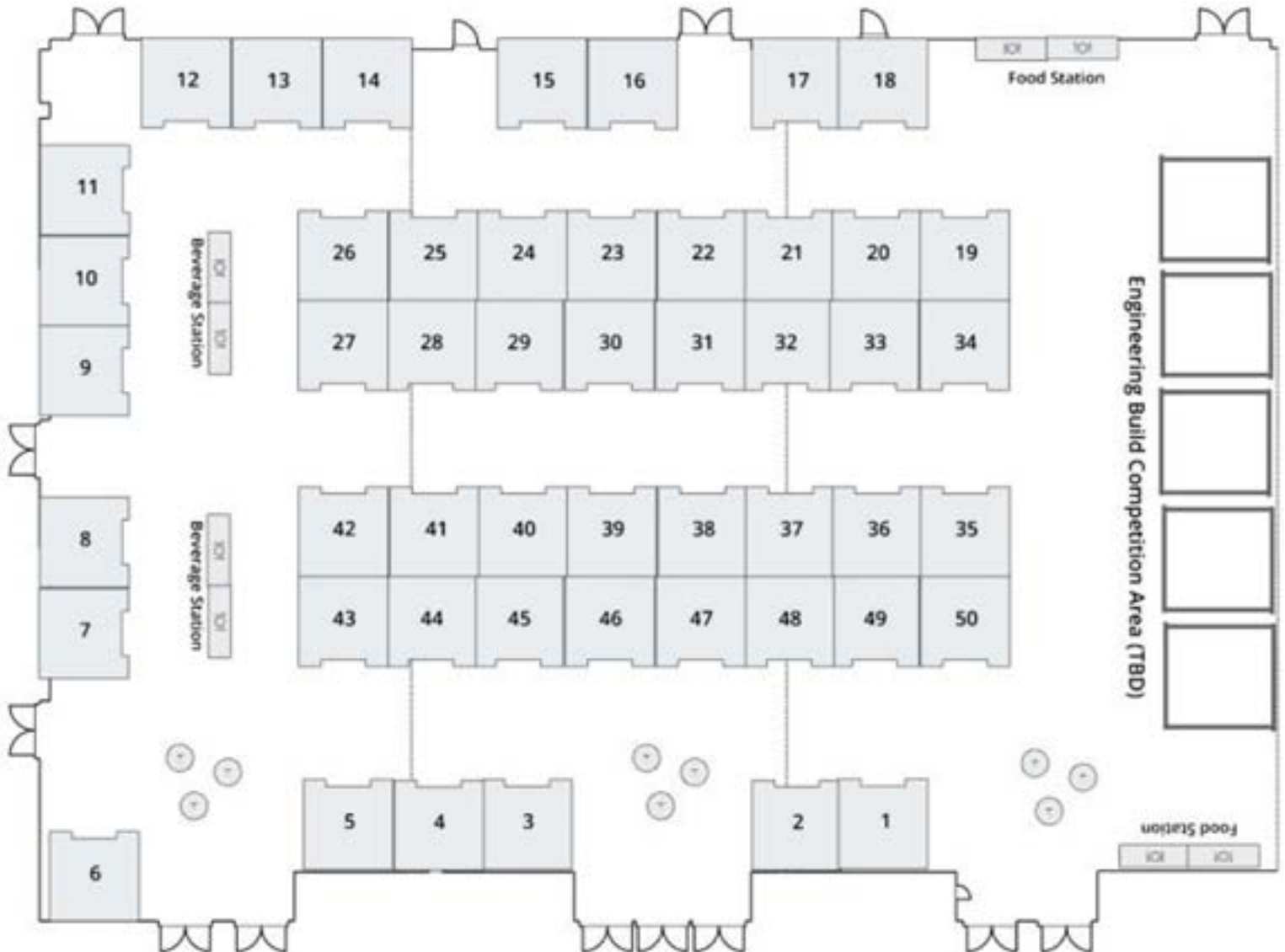
TECHNOLOGY • ENVIRONMENT • CULTURAL HERITAGE



EXHIBIT HALL MAP

This Exhibit Hall map is representative of the layout at press time. Recent updates to the layout will be available in the APT conference mobile app.

Please find the corresponding exhibitors on the next page.



SEATTLE • OCTOBER 9-14, 2023

The Future of TECH

TECHNOLOGY • ENVIRONMENT • CULTURAL HERITAGE



EXHIBITORS

Ace Mentor Group https://www.acementor.org/	Booth 11	Holmes https://www.holmes.us/	Booth 49
Allen Architectural Metals Inc. https://allenmetals.com/	Booth 42	JTM Construction https://jtmconstruction.com/	Booth 18
APT Technical Committee on Documentation https://www.apti.org/documentation/	Booth 10	John Canning & Co., Ltd. https://johncanningco.com/	Booth 7
AQYER, LLC https://www.aqyer.com/	Booth 2	Kalam Corporation https://kalam.us.com/	Booth 5
ASSORESTAURO https://www.assorestauror.org/	Booth 36-40	KEIM Mineral Coatings of America, Inc. https://www.keim-usa.com/	Booth 1
Atkinson-Noland & Associates, Inc. https://ana-usa.com/	Booth 26	LimeWorks®.us https://www.limeworks.us/	Booth 8
BEECK Mineral Paints https://www.beeckmineralpaints.com/	Booth 45	Ludowici https://ludowici.com/	Booth 34
Cathedral Stone Products, Inc. https://www.cathedralstone.com/	Booth 29	Masonry Institute of Washington http://www.masonryinstitute.com/	Booth 31
Cintec Reinforcement Systems Ltd https://cintec.com/	Booth 23	National Park Service https://www.nps.gov/	Booth 47
Computers & Structures, Inc. https://www.csiamerica.com/	Booth 20,21,32,33	Next Generation Systems https://www.nxtgensys.com/	Booth 22
Conrad Schmitt Studios, Inc. https://conradschmitt.com/	Booth 50	PROSOCO https://prosoco.com/	Booth 43
ECORAD INC https://www.ecorad.ca/	Booth 46	Pullman https://www.pullman-services.com/	Booth 19
Edison Coatings, Inc. https://www.edisoncoatings.com/	Booth 16	PYTHON Fasteners https://www.pythonfasteners.com/	Booth 4
EverGreene Architectural Arts https://evergreene.com/	Booth 6	Quaker Commercial https://www.quakercommercialwindows.com/	Booth 17
Foundation for Advancement in Conservation https://www.culturalheritage.org/	Booth 15	Quinn Evans https://www.quinnevans.com/	Booth 35
GeoSonics/Vibra-Tech https://www.geosonicsvibratech.com/	Booth 44	Traditional Cut Stone Ltd https://traditionalcutstone.com/	Booth 28
Getty Conservation Institute Getty Posters https://www.getty.edu/conservation/	Booth 24 Booth 12-14	US Heritage Group https://usheritage.com/	Booth 27
Gladding, McBean https://www.gladdingmcbean.com/	Booth 3	Vertical Access LLC https://vertical-access.com/	Booth 9
		Void Span https://www.voidspan.com/	Booth 41

APT SEATTLE CONFERENCE COMMITTEE VOLUNTEERS

The APT 2023 Seattle Conference would not be possible without the hard work and dedication of various volunteers. We would like to recognize and thank all of the following individuals for helping to make this conference come to life.

APT Conferences Committee

Jill Gotthelf
Julia Maglitz
Lyles McBratney
Dan Worth

Local Conferences Committee Co-Chairs

Maya Foty
Brian Rich

Presentation Session Chairs

Stace Moye
Ilene Tyler
Anita Simon
Stephen Kelley
Peter Meijer
Heather Crane
Paul Gaudette
Deborah Slaton
Evan Kopelson
Corey Spitzer
Kim Gant
Caroline Lemay
Evanne St. Charles
Pam Derry
Nick Vann

Workshop & Symposium Co-Chairs

Jeronimo Roldan
Matt Hamel

Communications Co-Chairs

Becca Pheasant-Reis
Kim Nightingale
Rhoda Lawrence
Dan Sloat

Continuing Education Co-Chairs

Rhoda Lawrence
Kritin Potterton

Presentation Track Chairs

Becky Wong
Nick Vann
Holly Borth

Field Session Co-Chairs

Michelle Thompson
Meghan Toner

Field Session Coordinators

Chris Brown
Jennifer Butler
Maya Foty
Horace Foxall
Ellen Mirro
Jeronimo Roldan
Kyle Elliott
Anita Simon
Yashpriya Gupta
Mariko Park
Sarah Francisca
Nick Vann
Michael Houser
Lisa Williams
Olson Kundig
Meghan Toner
Tama Tochiara
Josette Katcha
Jonathan Kovach
Mariko Park
Michael Houser
Sage Kim
Maddie Levesque

Development Committee Co-Chairs

Lorne McConachie
Kim Nightingale
Anna Murphy

Special Events Chair

Maureen Elenga
Matt Hamel

GENERAL INFORMATION

You must wear your badge for all conference events.

Meals: Full conference registration includes: The Exhibit Gala, continental breakfast (Wed., Thurs., Fri.), lunch in the Exhibit Hall, and refreshment breaks.

Workshop attendee registration includes continental breakfast and lunch each day of programming. Field session participants will receive a light snack.

All other meals are on your own, and a great opportunity to get out and see Seattle. Check the APT conference mobile app for a map of local places.

Events: Most conference events will take place at the Sheraton Grand. Workshops, symposium and field sessions with off-site locations will have transportation provided from the Sheraton Grand. Events taking place off-site will be listed on the Special Events page with information on transportation.

Events with fees (\$): Space permitting, you may still register for a workshop, field sessions and/or purchase special event (SE) tickets at the APT registration desk. Look for the (\$) symbol for any events that require an additional fee.

COVID-19: At press time, the APT 2023 Seattle Conference has no COVID-19 guidelines. We rely on attendee responsibility and comfort. Attendees may choose to wear a mask at any time. APT will issue a refund of conference registration fees to conference attendees who test positive for COVID-19 within 10 days of the start of the conference. Proof of positive test result (or a physician confirmation of illness) is required and should be sent to APT via email.

Guests: Registered guests will receive a badge which must to be worn during the conference. Guest registration includes general conference events and provided meals, but does not include presentations or any special events with a fee to attend.

Attire: Most events are business casual. Field sessions may combine both indoor and outdoor locations; it is recommended to dress in layers and wear good walking shoes. For the APT Awards Banquet, cocktail attire is recommended, but not mandatory.

Lost and Found: Will be located at conference registration desk at the Sheraton Grand during regular conference registration hours. All registration hours are listed on the agenda.

Conference mobile app: Make sure you download the mobile app! Not only is it needed to obtain CE credit, you can take notes, access your schedule, see a great map of Seattle, a map of the exhibit hall, a list of attendees and receive program updates through push notifications. There is also an activity feed, so you can see what your fellow preservationists are up to. We will have the mobile app and APT Resource Desk open during regular registration hours to help you with any technical difficulties.

MOBILE APP



SCAN HERE

YOU WILL NEED TO DOWNLOAD THE MOBILE APP AND USE THE QR SCANNING FUNCTION TO CHECK IN AT SESSIONS OFFERING CE CREDIT.

In addition, with the mobile app you can:

- Set up a personalized schedule
- Connect with other attendees
- Download your CE Certificates
- Explore Seattle

You cannot register for events via the mobile app; that needs to be done at the conference registration desk.

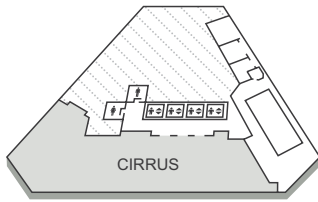
How to get started:

1. Download the eventScribe app
 - a. Scan the QR code above.
 - b. Search for "APT Seattle 2023."
2. Access the mobile app
 - a. Refer to the email sent by eventScribe to login with your email and provided password, OR
 - b. Use the email you used to register for the conference as your Username. Click "Forgot Password" to have your password sent to your email, OR
 - c. Email luke@apti.org to have your password reset and sent to you.

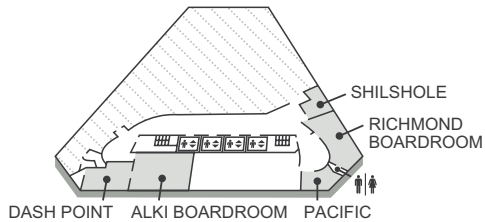
3. Set up your profile and schedule:
 - a. Please set up your profile as it will help others to connect and collaborate with you.
4. Check-In to events offering CE credit:
 - a. Use the QR reader within the mobile app to scan the QR code within the first 15 minutes of each event.
5. Process your CE credits:
 - a. Once complete with your session, you need to complete your session survey in order to be issued your CE credit. Please allow up to 60 days to see CE credit appear in your AIA or RCEP transcript.
6. Need help? Visit Luke at the APT Resource Desk during regular registration hours.

SHERATON GRAND MAP

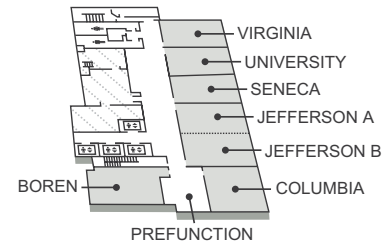
35th Floor – Pike Street Tower



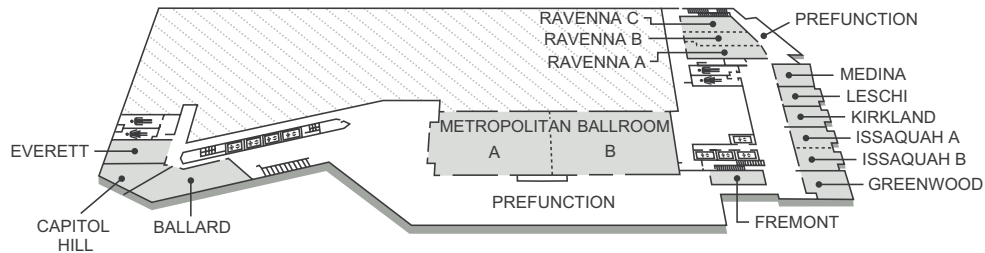
Fourth Floor – Pike Street Tower



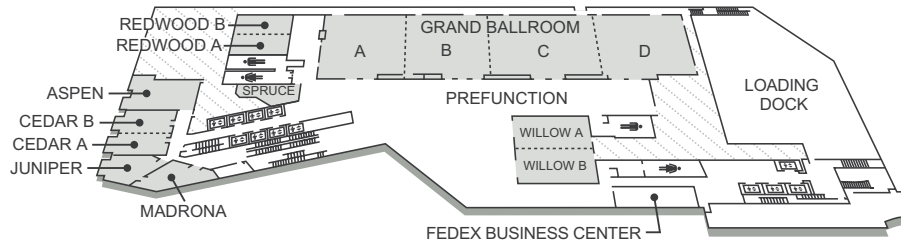
Fourth Floor – Union Street Tower



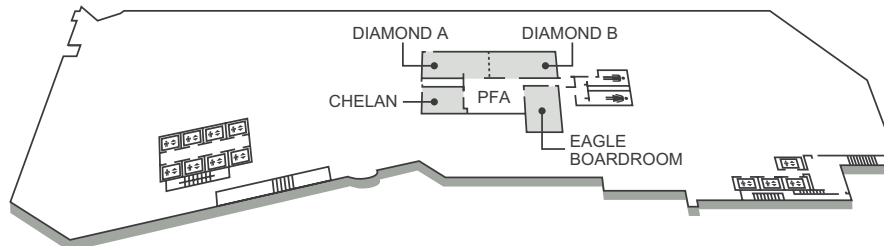
Third Floor



Second Floor



First Floor – Lobby Level



SEATTLE • OCTOBER 9-14, 2023

The Future of TECH

TECHNOLOGY • ENVIRONMENT • CULTURAL HERITAGE



NOTES

This image shows a full page of white paper with horizontal blue ruling lines. The word "NOTES" is printed in a large, bold, black sans-serif font at the top right corner. A thick black horizontal line runs across the entire width of the page, positioned just below the "NOTES" header. Below this line, there are numerous evenly spaced horizontal blue lines extending from the left margin to the right edge of the page, providing a template for writing notes.